

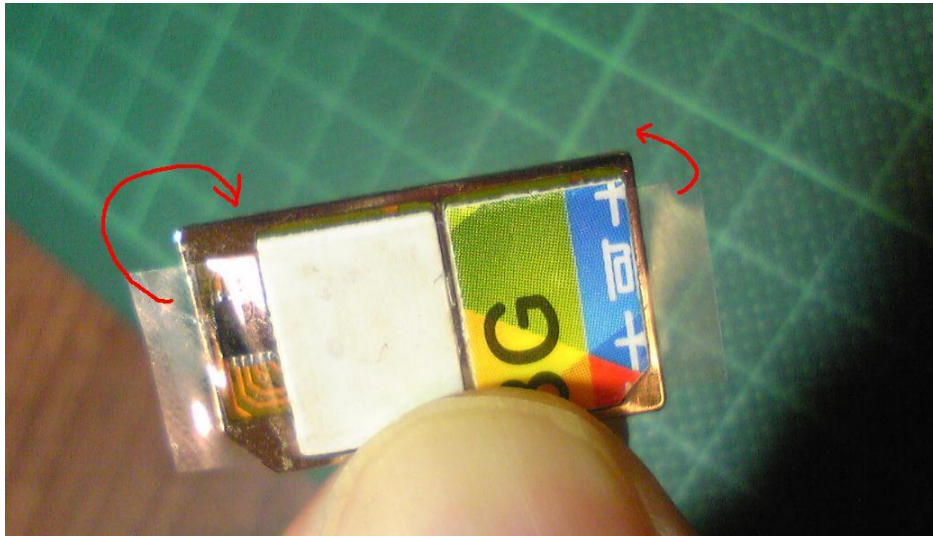
Installazione per Iphone 3G e 3GS

Non usare le cover metalliche con l'Iphone.

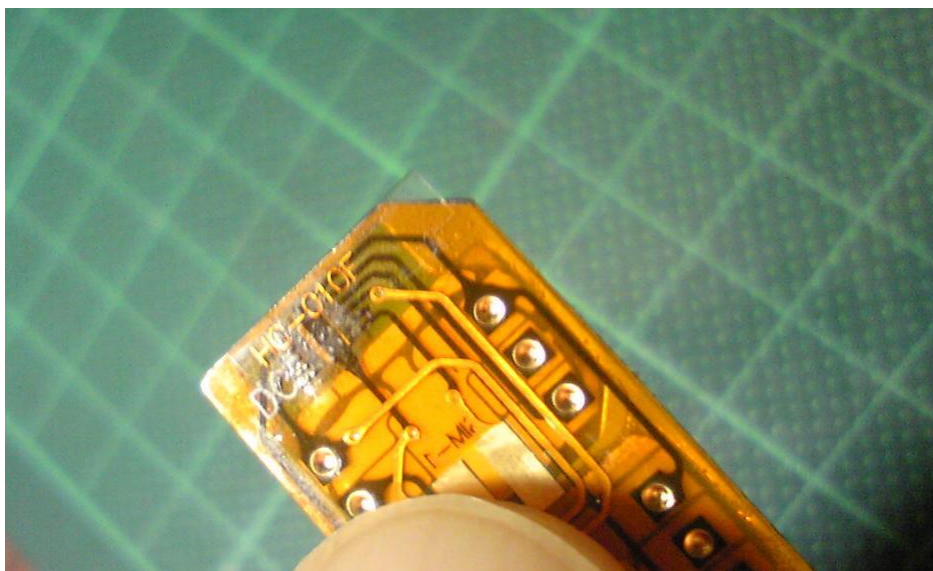
1. Mettere le due sim tagliate nella hypercard per Iphone



2. Usare del nastro adesivo per bloccare le due sim



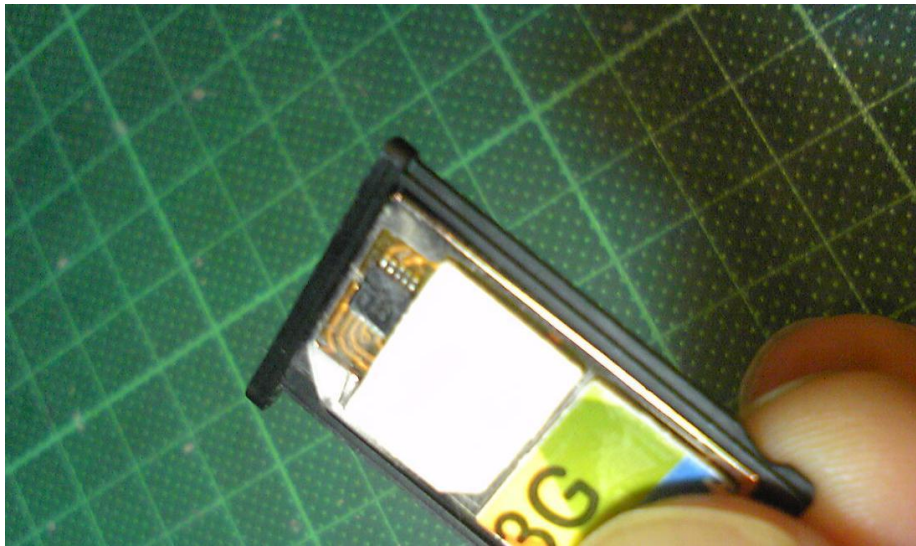
3. Tagliare il nastro adesivo in eccesso



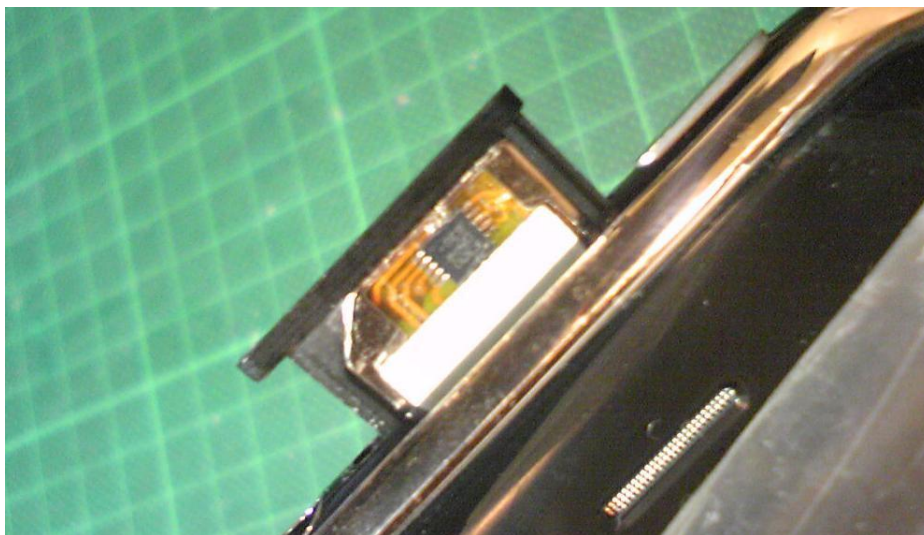
4. FINITO



5. PUT IT IN TRAY



6. INSERT TRAY TO IPHONE 3G



7. Switch to SIM-2, select "Setup"->"Phone"->"SIM application"-> SIM-2.
If the SIM-2 socket is empty, please don't select SIM-2